

General Tools/Materials you need to Acquire/Gather

- Pencil
- Tape Measure
- Drill/screwgun
- Bit for structural screws
- 1/4" wood drill bit
- Straight edge/carpenters square/chalkline
- 2x4s for ledgers--get 12' for each panel
- Circular Saw
- #3 Phillips Head Screwdriver
- #5 SPAX Screws or equivalent

Included Materials

Panels

Materials you need depending on the stud type

For Wood Studs

Recommended - 5/16 in. x 4 in. Rugged Structural Screws

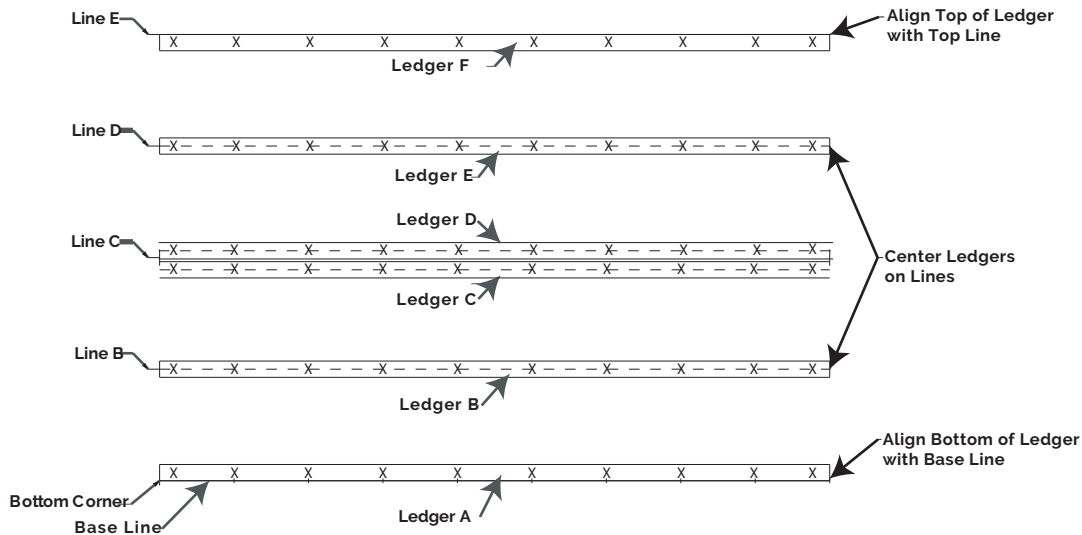
For Metal Studs

Recommended - #12-14 x 4 in. Unslotted Indented Hex Washer Head Self Drilling Screw Zinc #3 Point

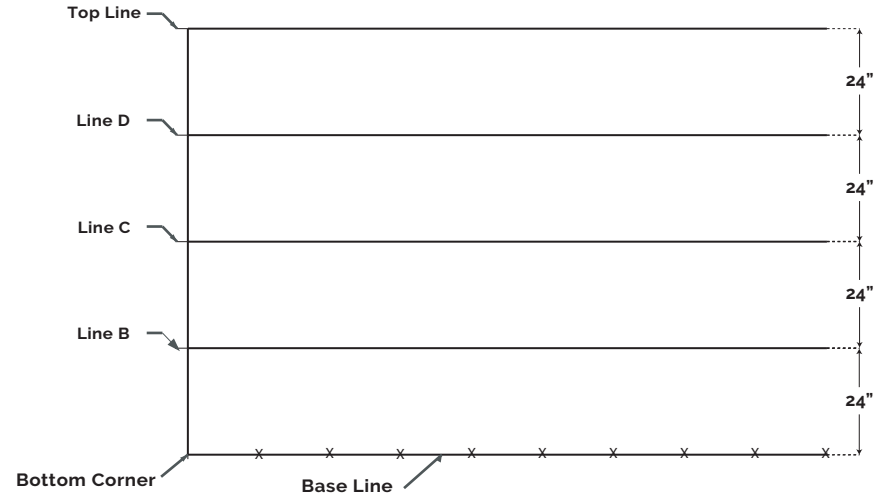
How to Find Wall Studs

Studs are generally spaced 16" on center (which means from the middle of one stud, to the middle of one next to it). Find studs on either side of a window or door, but their placement is determined by the floorplans so they won't typically have the 16" spacing. Most electrical boxes (switches or outlets) are attached to a stud on one side. Most 2x4s are actually 1-1/2 by 3-1/2 (all of which matters if you're trying to measure from the center of one stud to the next.) Trim (crown molding, baseboard, and shoe molding) is generally nailed to a stud. Use a stud finder.

Step 2: Placing the Ledgers



Step 1: Marking the Wall



Step 3: Placing the Panels

